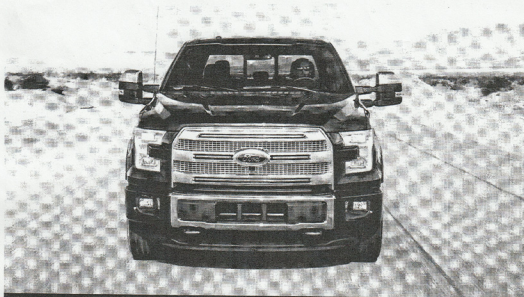


Get More Mileage From Your Ford F150 Ecoboost



Independent Research Performed by



With 99% Accuracy the Economaxx was field tested on a brand new Ford F-150, already the most fuel efficient pick-up on the market. Here are the results:



15.2%

Fuel Consumption
Reduction



12.7%

Reduction in
Emmisions



FUEL ECONOMY AND EMISSIONS TEST RESULTS: ECONOMAXX/FUEL GENIE

The Testing facility used was EMISSIONS ANALYTICS LLC out of California.

This test was comparing the effectiveness of the Economaxx device to similar OEM device in the latest Ford F150. The vehicle used in Economaxx testing was a 2015 Ford 150 Eco Boost 3.5 litre engine.

The test spread sheet attached shows before the Economaxx was installed and after the Economaxx was installed. It was tested for emission reduction and city driving. The product was tested 6 times with the same vehicle. The results were that each test was consistent in its findings.

There was significant reduction in emissions, an average of 12.7%. Greenhouse Gases and fuel consumption had a reduction of 15.2%.

The Economaxx can be installed in any make, model or year of diesel fueled or gas engine. The Economaxx is also compatible with all heavy equipment. Results run from 10% to 20 % in fuel savings depending on the vehicle the product is installed in.

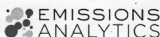
Fuel economy and emissions test results: Economaxx/Fuel Genie



Dates of testing
Lead engineer
Signed off

27-30 July 2015
Sam Boyle
Nick Molden

MGP	<u>Without Economaxx</u> City	<u>With Economaxx</u> City	<u>City</u>
Repeat #1	15.77	18.32	
Repeat #2	16.15	19.02	
Repeat #3	17.3	19.56	
Repeat #4	17.09	19.67	
Repeat #5	Rejected	18.26	
Repeat #6	14.9	17.47	
Average	16.24	18.72	15.20%
Standard Deviation	0.981	0.851	
Significance(two-tailed test)			99%
Carbonmonoxide	<u>Without Economaxx</u> City	<u>With Economaxx</u> City	<u>City</u>
Repeat #1	0.28	0.19	
Repeat #2	0.13	0.18	
Repeat #3	0.12	0.18	
Repeat #4	0.1	0.18	
Repeat #5	Rejected	0.2	
Repeat #6	0.18	0.21	
Average	0.16	0.19	18.90%
Standard Deviation	0.072	0.012	
Significance(two-tailed test)			No
Green house Gases	<u>Without Economaxx</u> City	<u>With Economaxx</u> City	<u>City</u>
Repeat #1	542.07	465.52	
Repeat #2	526.3	449.07	
Repeat #3	489.66	436.52	
Repeat #4	493.6	433.73	
Repeat #5	Rejected	467.53	
Repeat #6	565.67	488.53	
Average	523.46	456.81	-12.70%
Standard Deviation	32.288	20.982	
Significance(two-tailed test)			99%



[Home](#) [About Us](#) [What is EA](#) [Client Login](#) [Sign Up](#) [Free Data](#) [Contact](#) [Press Page](#) [Q](#)

What we do

Measure

Emissions Analytics is an independent commercial test house using Portable Emissions Measurement Systems (PEMS) exclusively and intensively to measure real-world fuel economy and on-road emissions.

Analyse

Emissions Analytics's data scientists apply advanced mathematical techniques to extract business intelligence from a data inventory of more than 800 passenger car tests. They are unrivalled experts at turning data into knowledge.

Reveal

Whether it's gaining commercial advantage from the data we hold on your competitors or commissioning us to test your product, Emissions Analytics helps you make sound, data-informed strategic decisions.

What makes us different?

- Real drive cycles
- Dynamic performance analysis
- International testing using common method
- Real-world results with laboratory equivalent accuracy

Why PEMS?

Our Portable Emissions Measurement Systems (PEMS) is the same technology found in a traditional testing laboratory, but packaged for on-board installation.

It measures the gases coming out of the tailpipe as well as recording how and where the vehicle is being driven.

The technology is well established and is used by government test facilities around the world.

The precision and approach to testing is akin to the standards of the laboratory.

The advantages of PEMS include rapid installation, no modification to the vehicle, and true in-use performance data. Combined with our flexible and adaptable approach to testing which allows for alterations to the test plan and repeats of interesting or problematic sections, PEMS testing with Emissions Analytics is the best option.

How we do it

- Using a Portable Emissions Measurement System (PEMS) manufactured by US company Sensors Inc., and the Pegasor Mi2 for particulates, tailpipe emissions are sampled and analysed on the road at the rate of one hertz.
- Vehicles are taken on a specially developed public highway route, or a test track and driven until a high level of confidence in the data is achieved.
- Information from the CANBUS, combined with data from our on-board GPS and weather stations build a complete picture of the vehicle's performance
- Our post-processing and analysis of the data using proprietary software ensures we can compare results between different vehicles and provide valuable insight into the causes of emissions.